



Green Leaf Lab®

12025 NE Marx St. Portland, OR 97220
503-253-3511 / www.greenleflabs.com
License#: 10029074C70

Quality Control Testing Official Report

1000mg Full Spectrum CBD Tincture

Sample ID: G1E0287-02

Matrix: Hemp Products

Test ID: 5015665

Source ID: Batch #4A02

Date Sampled: 05/14/21

Date Accepted: 05/14/21



High Tide Holistics Inc.

Results at a Glance

Total THC : 0.1232 %

Total CBD : 3.546 %

Residual Solvent Analysis : PASS

Total Terpenes : 0.1429 % PASS



ISO 17025
ACCREDITED
LABORATORY

Brittany Wiemer

Brittany Wiemer
Quality Officer - 5/18/2021

These results relate only to the sample included on this report. The report may not be reproduced except in full, without the written permission of Green Leaf Lab.

This is for informational testing and is not compliance testing. Lab results apply to the sample as received.



1000mg Full Spectrum CBD Tincture

Sample ID: G1E0287-02

Matrix: Hemp Products

Test ID: 5015665

Source ID: Batch #4A02

Date Sampled: 05/14/21

Date Accepted: 05/14/21



High Tide Holistics Inc.

Potency Analysis

Date/Time Extracted: 05/17/21 09:52

Analysis Method/SOP: 215

Batch Identification: 2121004

Cannabinoids	LOQ (%)	mg/g	Cannabinoids Profile	
Total THC	0.0607	1.232		
Total CBD	0.0633	35.46		
THCA	0.0876	< LOQ		
delta 9-THC	0.0607	1.232		
THCV	0.0595	< LOQ		
THCVA	0.0891	< LOQ		
CBD	0.0633	35.46		
CBDA	0.0872	< LOQ		
CBDV	0.0612	< LOQ		
CBDVA	0.0841	< LOQ		
CBN	0.0550	< LOQ		
CBG	0.0640	< LOQ		
CBGA	0.0848	< LOQ		
CBC	0.0803	2.357		

Total THC = delta 9-THC + (THCA * 0.877)

Total CBD = CBD + (CBDA * 0.877)

Total CBG = CBG + (CBGA * 0.878)

LOQ=Limit of Quantification, the lowest measurable concentration of an analyte.



Brittany Wiemer

Brittany Wiemer
Quality Officer - 5/18/2021

These results relate only to the sample included on this report. The report may not be reproduced except in full, without the written permission of Green Leaf Lab.

This is for informational testing and is not compliance testing. Lab results apply to the sample as received.



1000mg Full Spectrum CBD Tincture

Sample ID: G1E0287-02

Matrix: Hemp Products

Test ID: 5015665

Source ID: Batch #4A02

Date Sampled: 05/14/21

Date Accepted: 05/14/21



High Tide Holistics Inc.

Terpene Analysis

Date/Time Extracted: 05/17/21 09:52

Analysis Method/SOP: 204

Monoterpenes	%	mg/g	Monoterpenes	%	mg/g
Camphene	< LOQ	< LOQ	Camphor	< LOQ	< LOQ
3-Carene	< LOQ	< LOQ	alpha-Cedrene	< LOQ	< LOQ
Cedrol	< LOQ	< LOQ	Endo-fenchyl alcohol	< LOQ	< LOQ
Eucalyptol	< LOQ	< LOQ	Fenchone	< LOQ	< LOQ
Geraniol	< LOQ	< LOQ	Geranyl acetate	< LOQ	< LOQ
Hexahydrothymol	< LOQ	< LOQ	Isoborneol	< LOQ	< LOQ
Isopulegol	< LOQ	< LOQ	Limonene	< LOQ	< LOQ
Linalool	< LOQ	< LOQ	p-Mentha-1,5-diene	< LOQ	< LOQ
beta-Myrcene	< LOQ	< LOQ	alpha-Pinene	< LOQ	< LOQ
beta-Pinene	< LOQ	< LOQ	Pulegone	< LOQ	< LOQ
Sabinene	< LOQ	< LOQ	Sabinene hydrate	< LOQ	< LOQ
gamma-Terpinene	< LOQ	< LOQ	alpha-Terpinene	< LOQ	< LOQ
Terpineol	< LOQ	< LOQ	Terpinolene	< LOQ	< LOQ
B Y-Terpineol	< LOQ	< LOQ	Nerol	< LOQ	< LOQ
A-Terpineol	< LOQ	< LOQ	Borneol	< LOQ	< LOQ
Ocimene isomer II	< LOQ	< LOQ	Ocimene isomer I	< LOQ	< LOQ
Sesquiterpenes	%	mg/g	Sesquiterpenes	%	mg/g
alpha-Bisabolol	0.05672	0.5672	beta-Caryophyllene	0.04524	0.4524
Caryophyllene Oxide	< LOQ	< LOQ	Guaiol	0.01041	0.1041
alpha-Humulene	0.01324	0.1324	trans-Nerolidol	< LOQ	< LOQ
Valencene	0.01724	0.1724	cis-Nerolidol	< LOQ	< LOQ
Total Terpenes	0.1429	1.429			

<LOQ - Results below the Limit of Quantitation - Terpenes profile/analysis are not accredited to ORELAP TNI 2009 Quality Standards.



ISO 17025
ACCREDITED
LABORATORY

Brittany Wiemer

Brittany Wiemer
Quality Officer - 5/18/2021

These results relate only to the sample included on this report. The report may not be reproduced except in full, without the written permission of Green Leaf Lab.

This is for informational testing and is not compliance testing. Lab results apply to the sample as received.



1000mg Full Spectrum CBD Tincture

Sample ID: G1E0287-02

Matrix: Hemp Products

Test ID: 5015665

Source ID: Batch #4A02

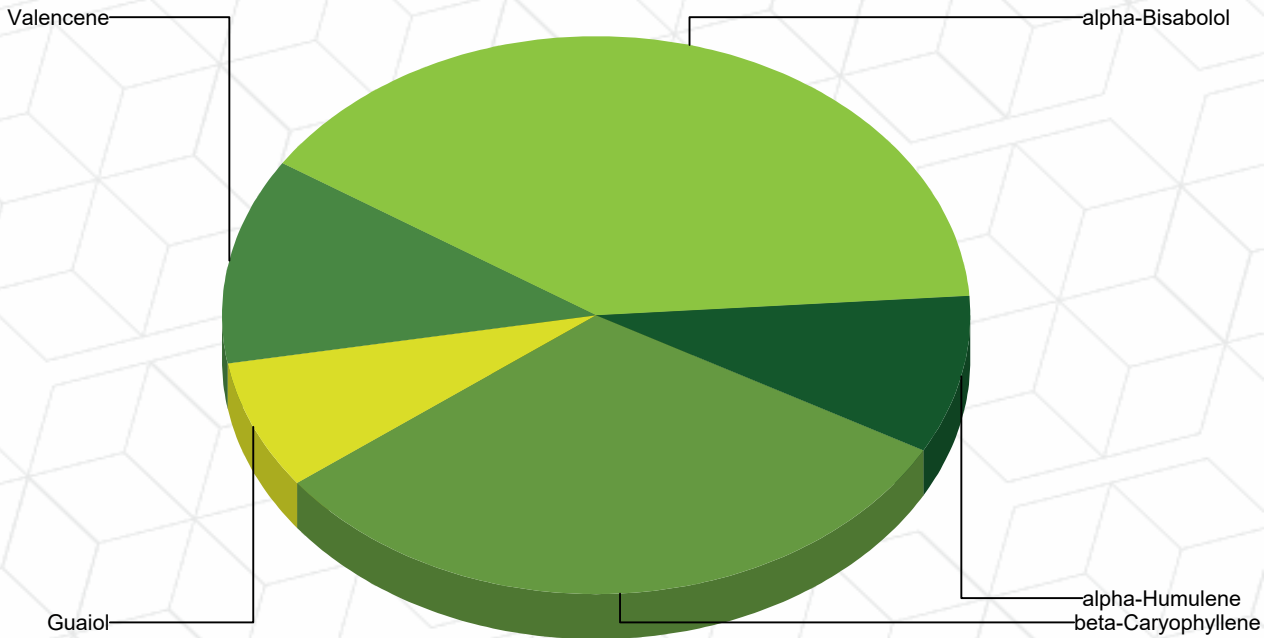
Date Sampled: 05/14/21

Date Accepted: 05/14/21



High Tide Holistics Inc.

Terpene Profile



Percentage of Total Terpenes Identified



Brittany Wiemer

Brittany Wiemer
Quality Officer - 5/18/2021

These results relate only to the sample included on this report. The report may not be reproduced except in full, without the written permission of Green Leaf Lab.

This is for informational testing and is not compliance testing. Lab results apply to the sample as received.



1000mg Full Spectrum CBD Tincture

Sample ID: G1E0287-02

Matrix: Hemp Products

Test ID: 5015665

Source ID: Batch #4A02

Date Sampled: 05/14/21

Date Accepted: 05/14/21



High Tide Holistics Inc.

Residual Solvents

Date/Time Extracted: 05/17/21 10:36

Analysis Method/SOP: 205

Analyte	Result	Action Level	LOD	LOQ	Units	Notes
1,4-Dioxane	< LOQ	380		50.00	ppm	
2-Butanol	< LOQ	5000		1000	ppm	
2-Ethoxyethanol	< LOQ	160		80.00	ppm	
2-Propanol (IPA)	< LOQ	5000		1000	ppm	
Acetone	< LOQ	5000		1000	ppm	
Acetonitrile	< LOQ	410		50.00	ppm	
Benzene	< LOQ	2		1.000	ppm	
Butanes	< LOQ	5000		1000	ppm	
Cumene	< LOQ	70		35.00	ppm	
Cyclohexane	< LOQ	3880		50.00	ppm	
Dichloromethane	< LOQ	600		50.00	ppm	
Ethyl acetate	< LOQ	5000		1000	ppm	
Ethyl benzene	< LOQ	2170		35.00	ppm	
Ethyl ether	< LOQ	5000		1000	ppm	
Ethylene glycol	< LOQ	620		310.0	ppm	
Ethylene oxide	< LOQ	50		25.00	ppm	
Heptane	< LOQ	5000		1000	ppm	
Hexanes	< LOQ	290		50.00	ppm	
Isopropyl acetate	< LOQ	5000		1000	ppm	
Methanol	< LOQ	3000		1000	ppm	
Pentanes	< LOQ	5000		1000	ppm	
Propane	< LOQ	5000		1000	ppm	
Tetrahydrofuran	< LOQ	720		50.00	ppm	
Toluene	< LOQ	890		50.00	ppm	
Xylenes	< LOQ	2170		50.00	ppm	

<LOQ - Results below the Limit of Quantitation

Results above the Action Level fail state testing requirements and will be highlighted Red.



ISO 17025
ACCREDITED
LABORATORY

Brittany Wiemer

Brittany Wiemer
Quality Officer - 5/18/2021

These results relate only to the sample included on this report. The report may not be reproduced except in full, without the written permission of Green Leaf Lab.

This is for informational testing and is not compliance testing. Lab results apply to the sample as received.



Quality Control Potency

Batch: 2121004 - 215-Products

Blank(2121004-BLK2)							
Analyte	Result	LOQ	Units	%Recovery Limits	Extracted	Analyzed	Notes
THCA	< LOQ	0.0221	%		05/17/21 09:52	05/17/21 19:10	
delta 9-THC	< LOQ	0.0153	%		05/17/21 09:52	05/17/21 19:10	
THCV	< LOQ	0.0150	%		05/17/21 09:52	05/17/21 19:10	
THCVA	< LOQ	0.0224	%		05/17/21 09:52	05/17/21 19:10	
CBD	< LOQ	0.0159	%		05/17/21 09:52	05/17/21 19:10	
CBDA	< LOQ	0.0220	%		05/17/21 09:52	05/17/21 19:10	
CBDV	< LOQ	0.0154	%		05/17/21 09:52	05/17/21 19:10	
CBDVA	< LOQ	0.0212	%		05/17/21 09:52	05/17/21 19:10	
CBN	< LOQ	0.0138	%		05/17/21 09:52	05/17/21 19:10	
CBG	< LOQ	0.0161	%		05/17/21 09:52	05/17/21 19:10	
CBGA	< LOQ	0.0213	%		05/17/21 09:52	05/17/21 19:10	
CBC	< LOQ	0.0202	%		05/17/21 09:52	05/17/21 19:10	

Reference(2121004-SRM2)							
Analyte	% Recovery	LOQ	Units	%Recovery Limits	Extracted	Analyzed	Notes
delta 9-THC	94.0	0.0153	%	80-120	05/17/21 09:52	05/17/21 19:45	
CBD	102	0.0159	%	80-120	05/17/21 09:52	05/17/21 19:45	

Solvent Analysis

Batch: 2121010 - 205

Blank(2121010-BLK1)							
Analyte	Result	LOQ	Units	%Recovery Limits	Extracted	Analyzed	Notes
Acetone	< LOQ	1000	ppm		05/17/21 10:36	05/18/21 08:38	
Acetonitrile	< LOQ	50.00	ppm		05/17/21 10:36	05/18/21 08:38	
Benzene	< LOQ	1.000	ppm		05/17/21 10:36	05/18/21 08:38	
Butanes	< LOQ	1000	ppm		05/17/21 10:36	05/18/21 08:38	
2-Butanol	< LOQ	1000	ppm		05/17/21 10:36	05/18/21 08:38	
Cumene	< LOQ	35.00	ppm		05/17/21 10:36	05/18/21 08:38	
Cyclohexane	< LOQ	50.00	ppm		05/17/21 10:36	05/18/21 08:38	
Dichloromethane	< LOQ	50.00	ppm		05/17/21 10:36	05/18/21 08:38	
1,4-Dioxane	< LOQ	50.00	ppm		05/17/21 10:36	05/18/21 08:38	
2-Ethoxyethanol	< LOQ	80.00	ppm		05/17/21 10:36	05/18/21 08:38	
Ethyl acetate	< LOQ	1000	ppm		05/17/21 10:36	05/18/21 08:38	
Ethyl benzene	< LOQ	35.00	ppm		05/17/21 10:36	05/18/21 08:38	
Ethylene glycol	< LOQ	310.0	ppm		05/17/21 10:36	05/18/21 08:38	
Ethylene oxide	< LOQ	25.00	ppm		05/17/21 10:36	05/18/21 08:38	
Ethyl ether	< LOQ	1000	ppm		05/17/21 10:36	05/18/21 08:38	
Heptane	< LOQ	1000	ppm		05/17/21 10:36	05/18/21 08:38	
Hexanes	< LOQ	50.00	ppm		05/17/21 10:36	05/18/21 08:38	



Brittany Wiemer

Brittany Wiemer
Quality Officer - 5/18/2021

These results relate only to the sample included on this report. The report may not be reproduced except in full, without the written permission of Green Leaf Lab.

This is for informational testing and is not compliance testing. Lab results apply to the sample as received.



Quality Control Solvent Analysis (Continued)

Batch: 2121010 - 205 (Continued)

Blank(2121010-BLK1)							
Analyte	Result	LOQ	Units	%Recovery Limits	Extracted	Analyzed	Notes
Isopropyl acetate	< LOQ	1000	ppm		05/17/21 10:36	05/18/21 08:38	
Methanol	< LOQ	1000	ppm		05/17/21 10:36	05/18/21 08:38	
Pentanes	< LOQ	1000	ppm		05/17/21 10:36	05/18/21 08:38	
Propane	< LOQ	1000	ppm		05/17/21 10:36	05/18/21 08:38	
2-Propanol (IPA)	< LOQ	1000	ppm		05/17/21 10:36	05/18/21 08:38	
Tetrahydrofuran	< LOQ	50.00	ppm		05/17/21 10:36	05/18/21 08:38	
Toluene	< LOQ	50.00	ppm		05/17/21 10:36	05/18/21 08:38	
Xylenes	< LOQ	50.00	ppm		05/17/21 10:36	05/18/21 08:38	

LCS(2121010-BS1)							
Analyte	% Recovery	LOQ	Units	%Recovery Limits	Extracted	Analyzed	Notes
Acetone	90.6	1000	ppm	70-130	05/17/21 10:36	05/17/21 12:43	
Acetonitrile	106	50.00	ppm	70-130	05/17/21 10:36	05/17/21 12:43	
Benzene	84.0	1.000	ppm	70-130	05/17/21 10:36	05/17/21 12:43	
n-Butane	98.2	50.00	ppm	70-130	05/17/21 10:36	05/17/21 12:43	
Butanes	96.2	1000	ppm	70-130	05/17/21 10:36	05/17/21 12:43	
2-Butanol	95.4	1000	ppm	70-130	05/17/21 10:36	05/17/21 12:43	
Cumene	84.1	35.00	ppm	70-130	05/17/21 10:36	05/17/21 12:43	
Cyclohexane	81.5	50.00	ppm	70-130	05/17/21 10:36	05/17/21 12:43	
Dichloromethane	96.0	50.00	ppm	70-130	05/17/21 10:36	05/17/21 12:43	
1,4-Dioxane	84.1	50.00	ppm	70-130	05/17/21 10:36	05/17/21 12:43	
2-Ethoxyethanol	125	80.00	ppm	70-130	05/17/21 10:36	05/17/21 12:43	
Ethyl acetate	87.6	1000	ppm	70-130	05/17/21 10:36	05/17/21 12:43	
Ethyl benzene	85.3	35.00	ppm	70-130	05/17/21 10:36	05/17/21 12:43	
Ethylene glycol	118	310.0	ppm	70-130	05/17/21 10:36	05/17/21 12:43	
Ethylene oxide	106	25.00	ppm	70-130	05/17/21 10:36	05/17/21 12:43	
Ethyl ether	96.1	1000	ppm	70-130	05/17/21 10:36	05/17/21 12:43	
Heptane	101	1000	ppm	70-130	05/17/21 10:36	05/17/21 12:43	
n-Hexane	97.0	50.00	ppm	70-130	05/17/21 10:36	05/17/21 12:43	
Hexanes	95.8	50.00	ppm	70-130	05/17/21 10:36	05/17/21 12:43	
iso-Butane	94.3	50.00	ppm	70-130	05/17/21 10:36	05/17/21 12:43	
Isopropyl acetate	86.8	1000	ppm	70-130	05/17/21 10:36	05/17/21 12:43	
iso-Pentane	133	50.00	ppm	70-130	05/17/21 10:36	05/17/21 12:43	BSH
Methanol	114	1000	ppm	70-130	05/17/21 10:36	05/17/21 12:43	
2-Methylpentane	113	50.00	ppm	70-130	05/17/21 10:36	05/17/21 12:43	
3-Methylpentane	98.6	50.00	ppm	70-130	05/17/21 10:36	05/17/21 12:43	
neo-Pentane	92.8	50.00	ppm	70-130	05/17/21 10:36	05/17/21 12:43	
n-Pentane	115	50.00	ppm	70-130	05/17/21 10:36	05/17/21 12:43	
Pentanes	114	1000	ppm	70-130	05/17/21 10:36	05/17/21 12:43	



Brittany Wiemer

Brittany Wiemer
Quality Officer - 5/18/2021

These results relate only to the sample included on this report. The report may not be reproduced except in full, without the written permission of Green Leaf Lab.

This is for informational testing and is not compliance testing. Lab results apply to the sample as received.



Quality Control Solvent Analysis (Continued)

Batch: 2121010 - 205 (Continued)

LCS(2121010-BS1)							
Analyte	% Recovery	LOQ	Units	%Recovery Limits	Extracted	Analyzed	Notes
Propane	78.0	1000	ppm	70-130	05/17/21 10:36	05/17/21 12:43	
2-Propanol (IPA)	115	1000	ppm	70-130	05/17/21 10:36	05/17/21 12:43	
Tetrahydrofuran	105	50.00	ppm	70-130	05/17/21 10:36	05/17/21 12:43	
Toluene	82.1	50.00	ppm	70-130	05/17/21 10:36	05/17/21 12:43	



Brittany Wiemer

Brittany Wiemer
Quality Officer - 5/18/2021

These results relate only to the sample included on this report. The report may not be reproduced except in full, without the written permission of Green Leaf Lab.

This is for informational testing and is not compliance testing. Lab results apply to the sample as received.



Notes and Definitions

- ATM Non-cannabis matrix related interference or suppression of Internal standard
- BLI Baseline Interference - Cannabinoid peak interference in chromatographic baseline affecting QC recovery .
- BLK Analyte detected in method blank, but not associated samples.
- BSH Blank Spike High - Blank Spike recovery above method limit. no detections in samples.
- BSL Blank Spike Low - Blank Spike recovery below lower method limit, analyte chromatography reviewed manually for all samples.
- C Interference due to co-elution
- CBD Interference due to co-elution
- CV1 CBD matrix interference on GC Pest chromatography
- CV2 CCV was above acceptance criteria, Non-detect samples are considered acceptable.
- INF CCV was below acceptance criteria, sample still exceeds regulatory limit.
- ISH One or more QC falls outside acceptance criteria. Data entered into LIMS for informational purposes only.
- ISL Internal Standard concentration is above acceptance criteria.
- MSH Internal Standard concentration is below acceptance criteria.
- MSI Matrix Spike High - Matrix Spike recovery above method limits.
- MSL Matrix Spike Interference - Matrix spike source sample contains analyte hit above calibration affecting recovery accuracy in Matrix Spike.
- TPP
- U Matrix Spike Low - Matrix Spike recovery below lower method limit, analyte chromatography reviewed manually for all samples.
Internal Standard concentration outside control limit due to matrix interference



Brittany Wiemer

Brittany Wiemer
Quality Officer - 5/18/2021

These results relate only to the sample included on this report. The report may not be reproduced except in full, without the written permission of Green Leaf Lab.

This is for informational testing and is not compliance testing. Lab results apply to the sample as received.